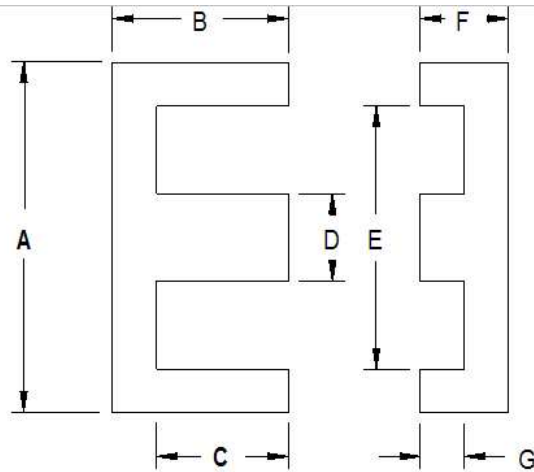


TSC bourgeois



TSC-ARNOLD TECHNOLOGIES EE LAMINATION DIMENSIONS

	PART #	A in	B in	C in	D in	E in	F in	G in
3/32	EE3031	0.375	0.219	0.172	0.093	0.281	0.156	0.109
1/8	EE2829	0.500	0.313	0.250	0.125	0.375	0.125	0.063
	EE3233	0.580	0.270	0.200	0.140	0.440	0.145	0.075
3/16	EE186187	0.750	0.531	0.438	0.188	0.563	0.344	0.250
1/4	EE2425	1.000	0.500	0.375	0.250	0.750	0.250	0.125
3/8	EE2627	1.250	0.688	0.500	0.375	0.875	0.375	0.188
	EE2638	1.250	0.520	0.333	0.375	0.875	0.375	0.188
	EE2738	1.250	0.688	0.500	0.375	0.875	0.520	0.333

TSC-ARNOLD TECHNOLOGIES EE LAMINATION SQUARE STACK EFFECTIVE CORE SET PARAMET

PART #	PATH LENGTH Le cm	CORE AREA Ae cm ²	CORE VOLUME Ve cm ³	WINDOW AREA Wa in ²	IN (80% Nickel)			LN (49% Nickel)			Silicon	
					0.006 Lbs/ Mprs	0.014 Lbs/ Mprs	0.006 Lbs/ Mprs	0.014 Lbs/ Mprs	0.014 Lbs/ Mprs	0.0185 Lbs/ Mprs	0.025 Lbs/ Mprs	
EE3031	2.28	0.06	0.13	0.17	0.166	0.387	0.157	0.366	0.339	---	---	
EE2829	2.72	0.10	0.28	0.25	0.267	0.624	0.251	0.585	0.546	---	---	
EE3233	2.72	0.13	0.34	0.27	0.298	0.699	0.281	0.660	0.603	---	---	
EE186187	5.20	0.23	1.18	0.83	0.756	1.765	0.713	1.665	1.546	---	---	
EE2425	4.92	0.52	2.54	0.81	0.415	2.210	0.894	2.090	1.940	---	---	
EE2627	6.26	0.91	5.68	1.11	1.860	4.350	1.760	4.110	3.810	---	---	
EE2638	5.41	0.91	4.90	0.84	1.620	---	1.530	---	---	---	---	
EE2738	7.00	0.91	6.35	1.34	2.450	---	2.310	---	---	---	---	

Other material thicknesses and ASTM grades available upon request